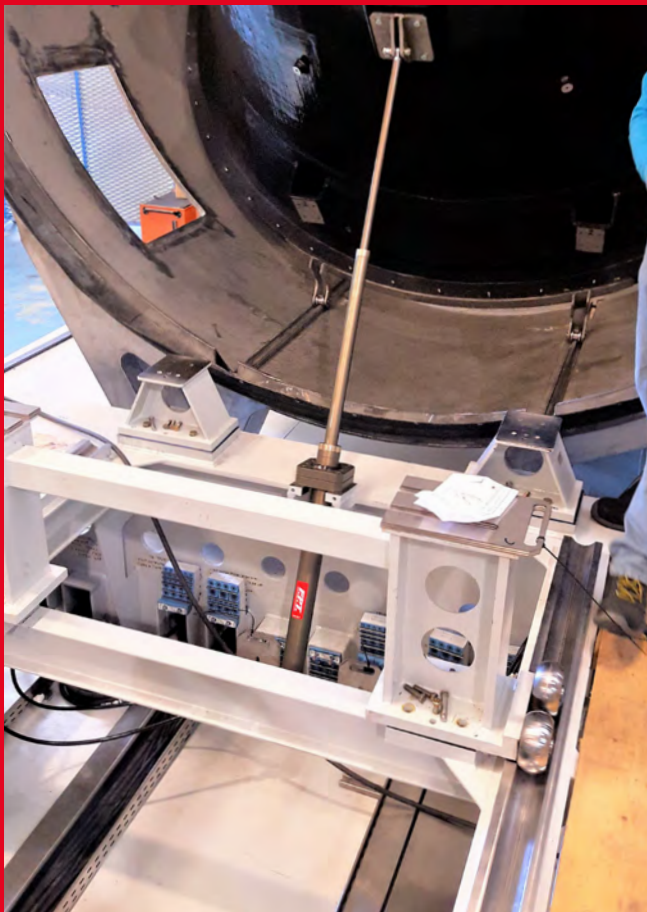




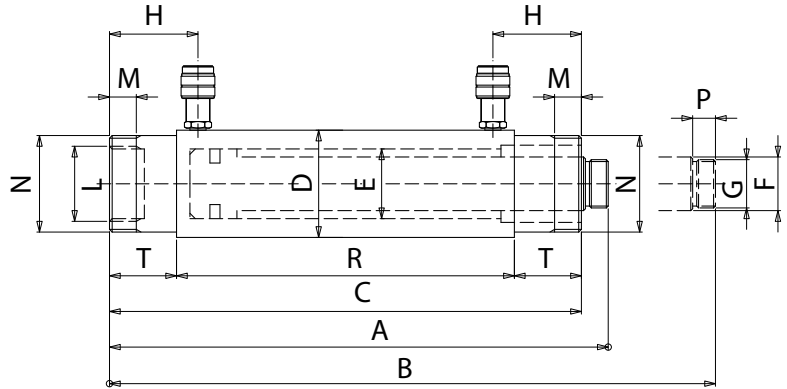
PRODUCT
PAGE

Double acting Push pull

CUSTOM CYLINDERS ON REQUEST



- Double acting hydraulic cylinders, push pull, high pressure. Push force from 5 to 30 ton with range of strokes from 30 mm to 260 mm.
- Hydraulic cylinders with thread on the body and rod that are assembled into more complex mechanical machinery with high-frequency push – pull cycles or for production applications.
- The guiding surfaces are sized to guarantee optimal performance in load offset absorption and the stop ring increases safety for the operator avoiding the extra stroke of piston.
- Equipped with high-strength gaskets for maximum durability.
- 3/8" NPT female coupler with dust cap equipped and it is possible to fix the cylinder to machinery or frameworks through the featured threads.
- External painting for maximum resistance against corrosion and wear.
- Possibility to design and produce custom made hydraulic cylinders on request, with dedicated geometries, performances and features.



CDE

CAP	STROKE	MODEL	MAX FORCE kN		SECTION cm ²		VOLUME cm ³		MASS	DIMENSIONS (mm)													
			Push	Pull	Push	Pull	Push	Pull		kg	A	B	C	D	E	F	G	H	L	M	N	P	R
5	30	CDE-5/30	49,5	22,9	7,1	3,3	21,2	9,8	2,1	174	204	154	49	30	22	M20x1,5	46	M35x1,5	14	M42x1,5	18	102	26
	60	CDE-5/60					42,4	19,6	2,7	207	267	184										132	
	100	CDE-5/100					70,7	32,7	3,5	247	347	224										170	
	160	CDE-5/160					113,1	52,3	4,3	307	467	284										232	
10	60	CDE-10/60	111,3	68,2	15,9	9,7	95,4	58,5	5,7	242	302	224	68	45	28	M24x2	56	M48x1,5	16	M60x2	18	150	36
	100	CDE-10/100					159	97,5	6,5	282	382	264										190	
	160	CDE-10/160					254,5	155,9	8	342	502	324										250	
	260	CDE-10/260					413,5	253,4	10,5	442	702	424										350	
22	80	CDE-22/80	232,3	121	33,2	17,3	265,5	138,2	14	342	422	316	92	65	45	M40x2	89	M70x2	26	M85x2	24	186	65
	160	CDE-22/160					530,9	276,5	17,5	422	582	396										266	
	260	CDE-22/260					862,8	449	21,5	522	782	496										366	
30	260	CDE-30/260	309,3	142,9	44,2	20,4	1148,6	530,9	33,5	532	792	504	113	75	55	M50x2	94	M80x2	28	M105x2	24	360	72

Higher tonnage cylinders and different strokes available.

