



PRODUCT
PAGE

To remove your nuts

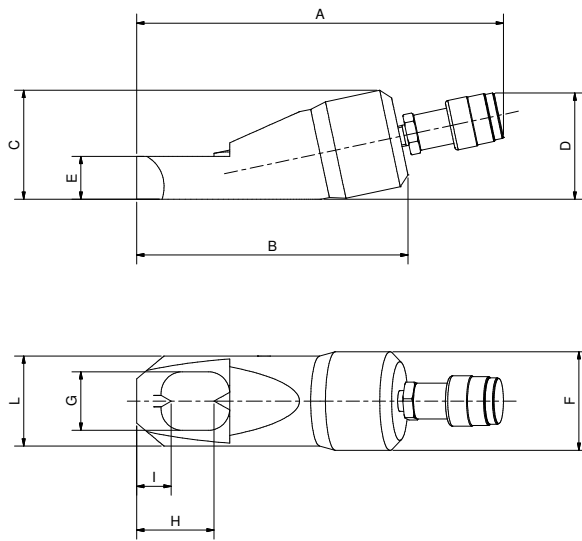
CUSTOM TOOLS ON REQUEST



- Used when nuts are difficult to remove due to rust or wear.
- Equipped with fixed and mobile blades to cut the nut in a single operation: the blades can be sharpened or replaced.
- Used in the petrochemical, railway and nautical sectors.

SAFETY INSTRUCTIONS

- Can be used on hexagonal nuts with hardness under 44 HRC
- During the cutting phase, position the blade to the centre of the surface to cut
- Avoid touching the washer if present



TB

| SCREW DIAMETER | HEX NUT DIAMETER | MODEL | FORCE in ton | DIMENSIONS (mm) | | | | | | | | | | WEIGHT kg | SPARE BLADE MODEL | |
|----------------|------------------|----------|--------------|-----------------|-----|-----|-----|----|-----|-----|-----|----|-----|-----------|-------------------|--------------|
| | | | | A | B | C | D | E | F | G | H | I | L | | FIXED BLADE | MOBILE BLADE |
| M8 - M12 | 13 - 19 | TB 13/19 | 5,5 | 203 | 133 | 48 | 58 | 19 | 43 | 26 | 41 | 21 | 40 | 1,2 | CF-13/19 | CM-13/19 |
| M12 - M16 | 19 - 24 | TB 19/24 | 11 | 233 | 163 | 65 | 68 | 25 | 58 | 34 | 47 | 22 | 55 | 2,3 | CF-19/24 | CM-19/24 |
| M16 - M22 | 24 - 32 | TB 24/32 | 16,5 | 260 | 190 | 75 | 74 | 30 | 69 | 41 | 57 | 24 | 63 | 3,2 | CF-24/32 | CM-24/32 |
| M22 - M27 | 32 - 41 | TB 32/41 | 21,8 | 297 | 230 | 90 | 80 | 35 | 84 | 55 | 77 | 35 | 78 | 5,1 | CF-32/41 | CM-32/41 |
| M27 - M33 | 41 - 50 | TB 41/50 | 35 | 347 | 280 | 112 | 93 | 42 | 103 | 68 | 89 | 38 | 98 | 10,4 | CF-41/50 | CM-41/50 |
| M33 - M39 | 50 - 60 | TB 50/60 | 49,5 | 395 | 330 | 136 | 105 | 52 | 124 | 82 | 103 | 42 | 118 | 17,5 | CF-50/60 | CM-50/60 |
| M39 - M48 | 60-75 | TB 60/75 | 90 | 454 | 400 | 182 | 132 | 75 | 168 | 110 | 113 | 28 | 154 | 38,5 | - | CM-60/75 |

