



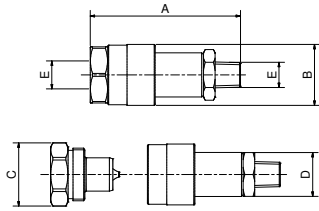
PRODUCT  
PAGE

For quick and safe connection of  
the hydraulic circuits

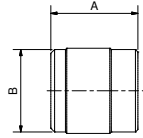
**CUSTOM QUICK COUPLERS  
ON REQUEST**



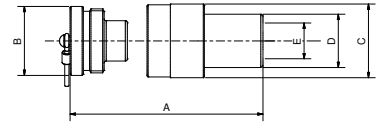
700 bar couplings available in standard or high flow version. Female quick couplers are equipped with dust caps. For very high pressures, quick couplers are available up to 4,000 bar depending on specific needs.



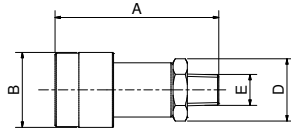
**GR-1  
GR-6  
GR-6P**



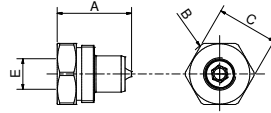
**GRT-1M  
GRT-6M**



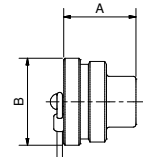
**GR-6FF**



**GR-1F  
GR-6F  
GR-6PF**



**GR-1M  
GR-6M  
GR-6PM**



**GRT-1F  
GRT-6F**

MODEL	Description				
	A	B	C	D	E
GR-1	78	30	CH27	CH22	1/4" NPT
GR-6	86	35	CH32	CH25	3/8" NPT
GR-6P	86	35	CH32	CH25	3/8" NPT
GR-1F	58	30	-	CH22	1/4" NPT
GR-6F	76	35	-	CH25	3/8" NPT
GR-6PF	76	35	-	CH25	3/8" NPT
GR-1M	37	30	CH27	-	1/4" NPT
GR-6M	35,5	36	CH32	-	3/8" NPT
GR-6PM	39	36	CH32	-	3/8" NPT
GRT-1M	28	30	-	-	-
GRT-6M	36	35,5	-	-	-
GRT-1F	20	28	-	-	-
GRT-6F	27	32,5	-	-	-

MAX WP	MODEL	Description	Connection
700 bar	GR-6F	Female quick coupler, male threaded	3/8" NPT Male
	GR-6M	Male quick coupler, female threaded	3/8" NPT Female
	GR-6FF	Female quick coupler, female threaded	3/8" NPT Female
	GR-6	Complete quick coupler (GR-6F + GR-6M)	3/8" NPT Male
	GRT-6M	Dust cap for GR-6M	-
	GR-1F	Female quick coupler, male threaded	1/4" NPT Male
	GR-1M	Male quick coupler, female threaded	1/4" NPT Female
	GR-1	Complete quick coupler (GR-1F + GR-1M)	1/4" NPT
700 bar - high flow	GR-6PF	Female coupler, male threaded, poppet sealing system	3/8" NPT Male
	GR-6PM	Male coupler, female threaded, poppet sealing system	3/8" NPT Female
1500 bar	GR-15F	Female quick coupler, female threaded	1/4" G
	GR-15M	Male quick coupler, female threaded	
2500 bar	GR-25F	Female quick coupler, female threaded	M16x1,5
	GR-25M	Male quick coupler, female threaded	
3000 bar	GR-30F	Female quick coupler, female threaded	M16x1,5
	GR-30M	Male quick coupler, female threaded	
4000 bar	GR-40F-M16	Female quick coupler, female threaded	M16x1,5
	GR-40M-M16	Male quick coupler, female threaded	